



CREATING A BETTER  
TOMORROW



# CONTENTS

Future Professionals Programme	3
Your future at RLB	8
About RLB	10
What we do	11
How we do it	12
Our services	13
Diversity and inclusion	18
Why RLB?	19
Global Experience Exchange Programme (GEEP)	20



## WHAT CAREER PATHWAYS ARE AVAILABLE TO YOU?

1. Future Professionals Graduate Programme	2. Future Professionals Year Out Placement	3. Degree Apprentices	4. Level 3 Apprentice	5. Summer Internship	6. Work Experience
<p><b>Who we're looking for:</b> Final year students, masters students or recently graduated students</p> <p><b>Length of scheme:</b> Two years</p> <p><b>Applications open:</b> Assessment days in December and January</p> <p><b>Start date:</b> Applications open September</p>	<p><b>Who we're looking for:</b> Second year undergraduate students</p> <p><b>Length of scheme:</b> One year</p> <p><b>Applications open:</b> Assessment days in December and January</p> <p><b>Start date:</b> Applications open September</p>	<p><b>Who we're looking for:</b> School leavers and career changers/returners</p> <p><b>Length of scheme:</b> Five years</p> <p><b>Start dates:</b> March and September</p>	<p><b>Who we're looking for:</b> School leavers and career changers/returners</p> <p><b>Length of scheme:</b> Twelve to eighteen months</p> <p><b>Applications open:</b> Anytime</p> <p><b>Start date:</b> Anytime</p>	<p><b>Who we're looking for:</b> Anyone interested in finding out more about the built environment or RLB specifically with the intention of undertaking higher education, including degree subjects or apprenticeships.</p> <p><b>Length of scheme:</b> Four to eight weeks</p> <p><b>Applications open:</b> January to April</p> <p><b>Start dates:</b> June to August</p>	<p><b>Who we're looking for:</b> Students aged 16 and over including career changers/returners</p> <p><b>Length of scheme:</b> One to two weeks</p> <p><b>Applications open:</b> Anytime</p> <p><b>Start date:</b> Anytime</p>

## WHAT COULD YOUR CAREER LOOK LIKE AT RLB?







## GRADUATE PROGRAMME

Future Professionals is RLB's graduate recruitment and training programme and forms an integral part of RLB's Future Professionals Programme.

We recruit exceptional graduates onto our two-year rotational development programme consisting of four six-month rotations in different areas of the business, dedicated to helping them become chartered.

Learn more about the graduate programme on our [website](#).

**We recruit circa. 50 graduates a year where we offer learning programmes to support their chartership.**

## YEAR OUT PLACEMENT

Each year we recruit candidates to join our year out placement scheme where they will work on fast track projects for a range of dynamic clients, supporting our teams across the UK.

Our year out candidates can gain experience across a range of sectors and across all aspects of cost management and quantity surveying, project management, programme management, building surveying, health and safety and specialist solutions.

We will provide you with a mentor and you will also participate in our reverse mentoring initiative where you will be matched with a senior member of staff and get the chance to share your ideas and views with them.

Learn more about year out placement on our [website](#).



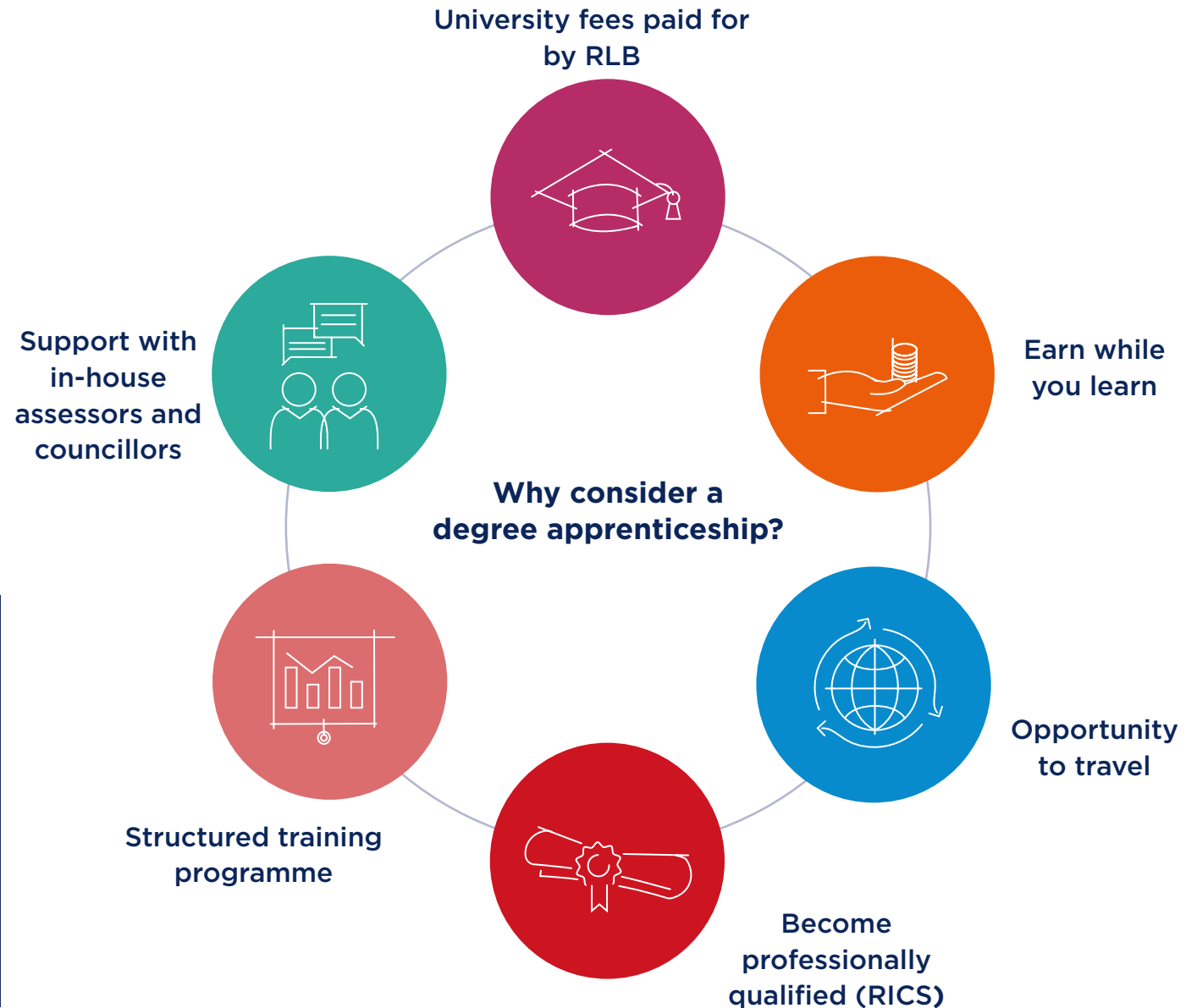
**Many of our year out placements return to RLB after graduating to be in a full time role. This is through our Graduate Programme to continue their professional qualification.**

## APPRENTICESHIPS

RLB's apprenticeships are an exciting opportunity to learn while you earn, in a supportive business that will put your career and development first. During degree apprenticeships, RLB will help you gain an academic and professional qualification.

Learn more about apprenticeships on our [website](#).

**Earn while you learn, have your degree funded and benefit from career-building, real world experience when you embark on an apprenticeship with RLB.**





## INTERNSHIPS AND WORK EXPERIENCE

RLB offers valuable work experience and internships to school leavers and undergraduates throughout the year. These are designed to give you exposure to our different disciplines; helping you to gain an insight into what your future career could look like at RLB.

Learn more about internships and work experience on our [website](#).

During your internship, you will gain a structured insight into our business and the built environment that will inform your future career plans.



## Graduates and Year Out Placements



Currently studying at university or about to graduate? Then our programme may be the right path for you.

Whether you are looking for a year in industry placement in your chosen discipline, or a full time graduate role, please visit our website for more information about Future Professionals or to submit an application.

## Internships and Work Experience



Interested in the built environment? Gain experience with RLB's internship and work experience programmes.

We can help you learn new skills, give you an insight into the industry and help you to decide on a future career.

## Apprenticeships



A professional apprenticeship could be for you if you enjoy learning on the job, are good at managing your time and want to earn while you learn.

There are a wide range of degree apprenticeship opportunities available at RLB across building surveying, project management, cost management and quantity surveying, including the chance to gain professional qualifications

We also offer Level 3 apprenticeships in fields such as IT and business services, learning and development and bidding. We also offer the Level 7 masters apprenticeship.



## YOUR FUTURE AT RLB

**At RLB we provide an environment that will encourage, enable and equip you to achieve success. We'll enable you to reach your goals and prepare you with the skills and confidence to succeed.**

Whichever discipline you are interested in joining, you'll be at ease knowing you're joining the One RLB purpose to:

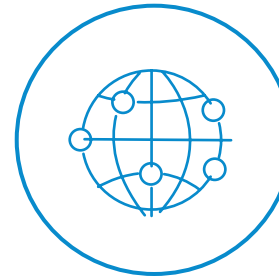
- have fun
- feel valued
- make money forever

Take a look into the Future Professionals Day 2022 [here](#)

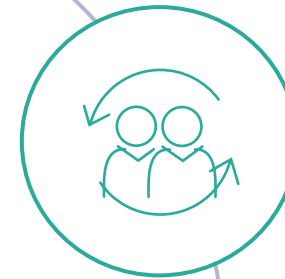


▲ FUTURE PROFESSIONALS DAY 2022

RLB has been involved in delivering some of the most iconic and innovative buildings in the world.



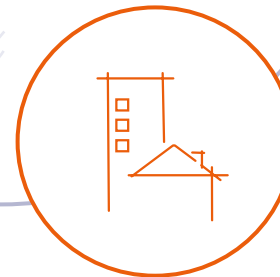
**4,200**  
employees  
worldwide



**1,500**  
employees in the  
UK and Europe



over  
**140**  
offices across  
more than 40  
countries worldwide



**38**  
UK and Europe  
offices

## WHAT WE DO

A career at RLB allows you to bring imagination to life and opens up a world of opportunities. Through RLB's Future Professionals Programme, we offer many different pathways to become chartered across our disciplines.



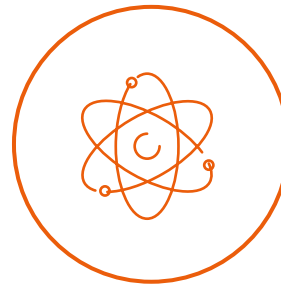
**Commercial**



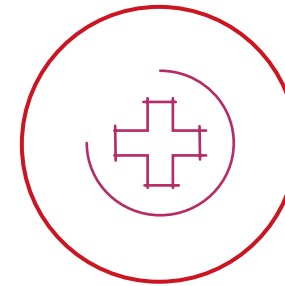
**Data Centres**



**Education**



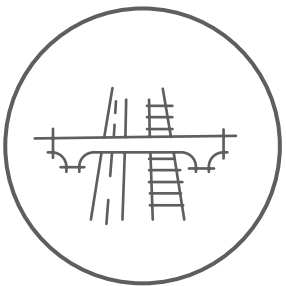
**Energy**



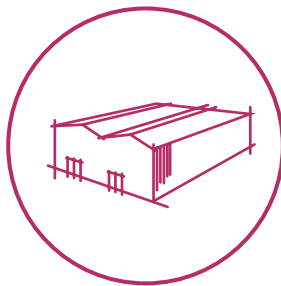
**Healthcare**



**Hotels, Hospitality  
and Leisure**



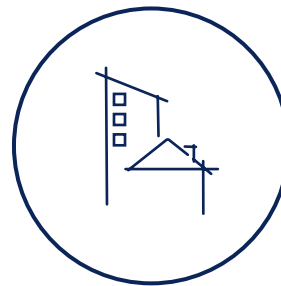
**Infrastructure**



**Logistics and  
Manufacturing**



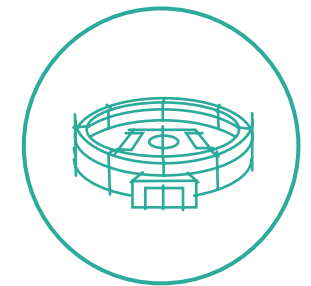
**Public and Civic**



**Residential**



**Retail**



**Sport**



## HOW WE DO IT

**RLB is an award winning, independent global construction and property consultancy providing management and advice throughout the built environment.**

By providing independent advice through the skills and passion of our people, we deliver value and sustainable solutions that are relevant today and into the future.

We:

- provide an environment to enable you to succeed;
- encourage building relations, sharing ideas and collaborating;
- enable you to reach your goals through continual learning and development programmes;
- equip you with the skills and confidence you need.



## What is Cost Management and Quantity Surveying?

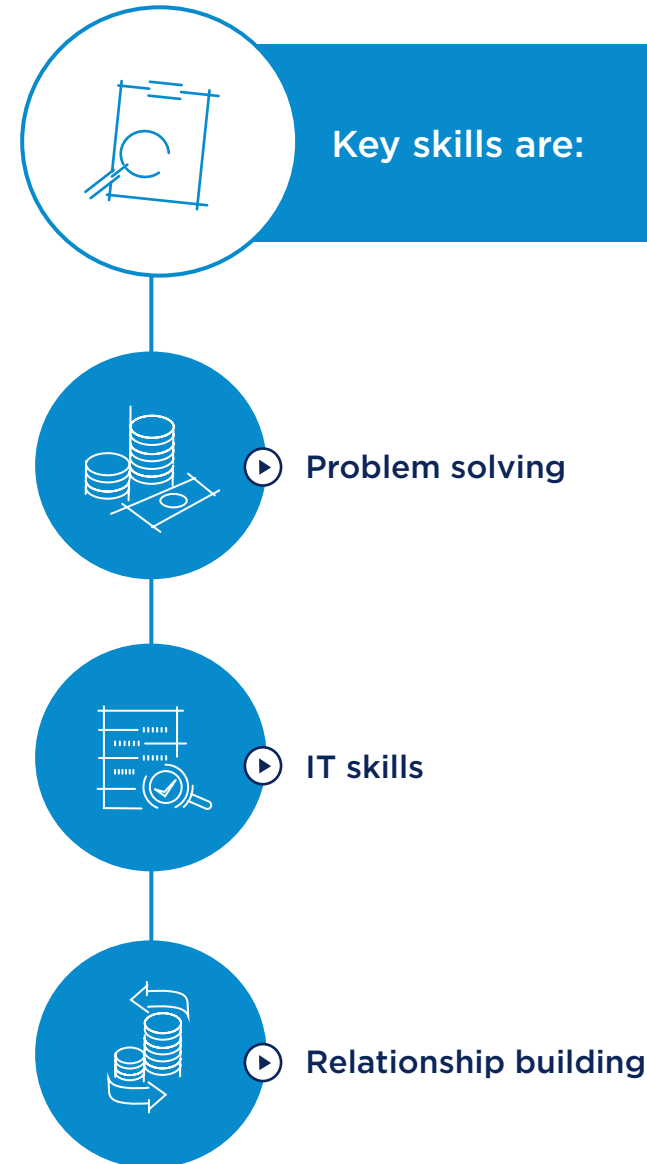
Cost Managers (or Quantity Surveyors) manage the costs of building projects from start to finish, looking for the best value for money and making sure the project meets legal and quality standards.

Learn more about this service on our [website](#).

“Starting my apprenticeship straight after sixth form, I was a novice to the industry. The relationships I have built in my team and with fellow RLB colleagues has provided me with real life work experience as well as support towards my degree. Everyone is always willing to answer any of my queries and always offer a helping hand when approaching university assignments.”

### Isabelle Bowen

Assistant Cost Manager (Apprentice)  
Birmingham



## What is Project Management?

Project Management is the management of people, time and costs by an individual or a team to ensure the efficient start, progress and conclusion of a project. All these elements apply to construction projects.

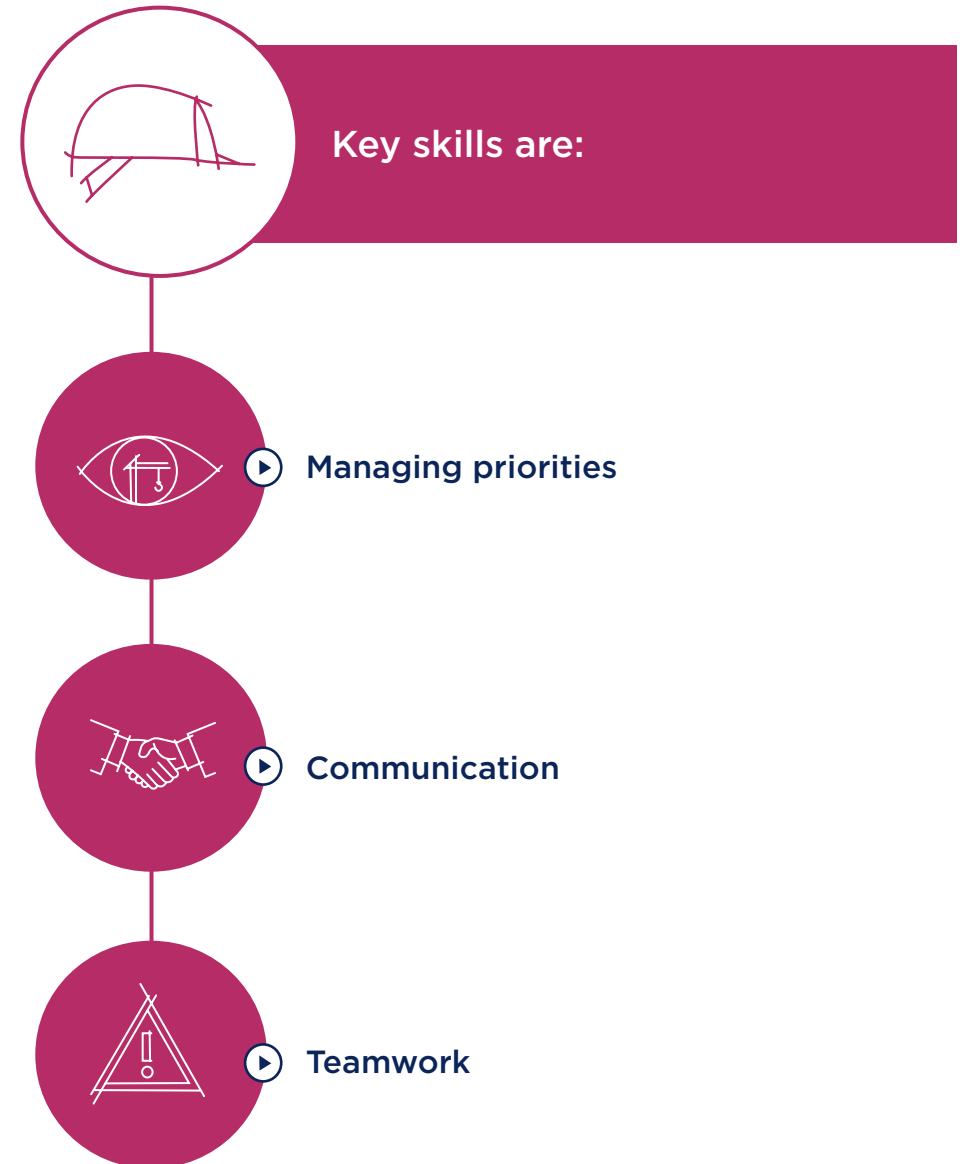
Project Managers at RLB are responsible for planning and managing building projects, such as refurbishing a house or building a skyscraper.

Learn more about this service on our [website](#).

**“During my time as a Project Management graduate at RLB, I have worked on several interesting projects in the West and Wales region including supporting a senior project manager on Bristol’s tallest building. During the project, I was given responsibility to manage a number of key project management processes which excelled my own personal and professional development. Your efforts and growth are recognised at RLB, and I was subsequently given more responsibility on my next project.”**

### Levi Jones

Assistant Project Manager  
Bristol





### What is Programme Management?

Programme Management is the process of managing several related projects, often with the intention of improving an organisation's overall performance.

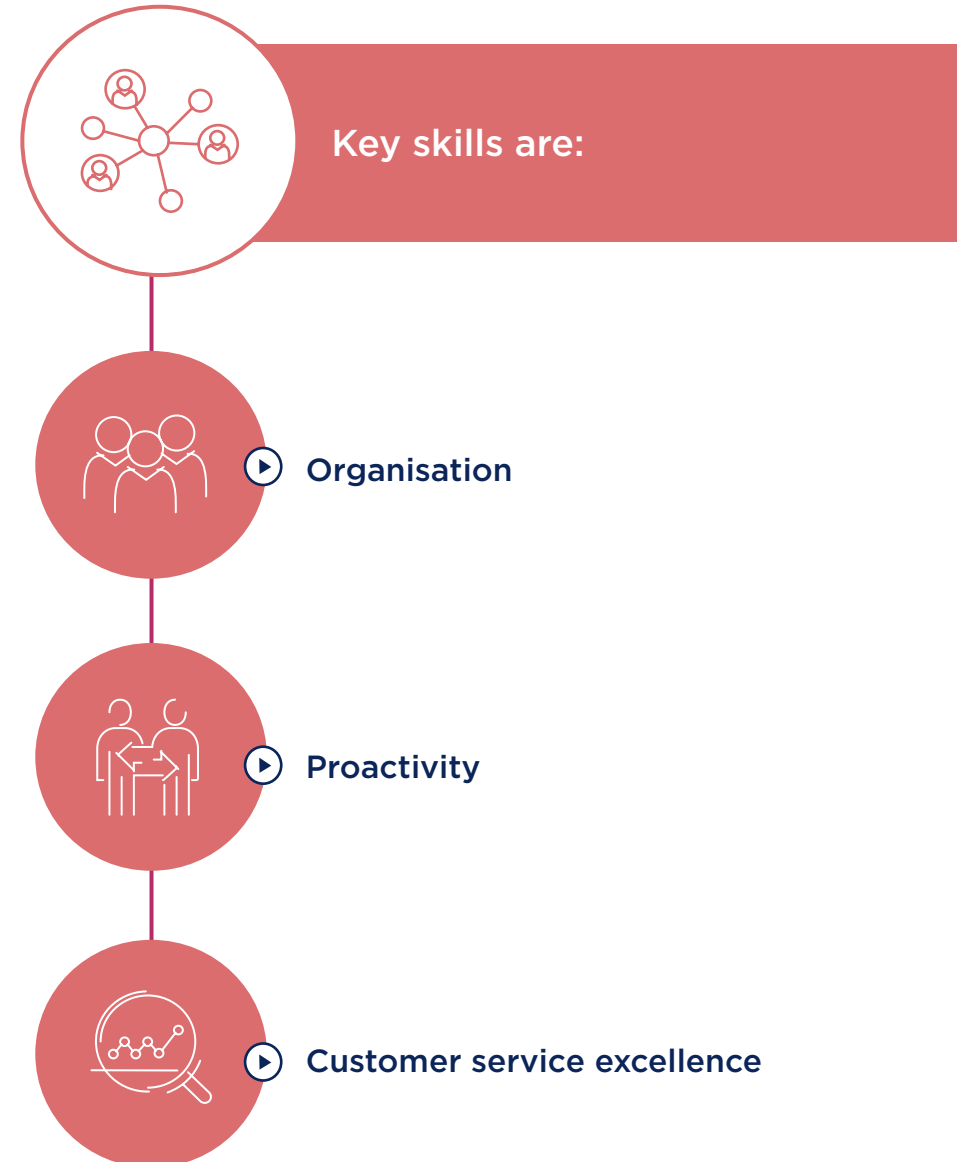
Programme Managers at RLB provide leadership and commitment to delivering change, and help provide innovative, cost-effective and outcome-oriented services across a wide range of projects and programmes.

Learn more about this service on our [website](#).

**“Moving to RLB was the best decision of my career. I love everything about the company. The office environment is welcoming and inclusive for all, and the team are like one big family. It never seems like we are separate disciplines, as everyone is working together and approachable, from top to bottom.”**

**Andy Ridgway**

Assistant Cost Manager (Graduate)  
Liverpool



### What is Building Surveying?

Those working in Building Surveying offer advice on many aspects of property, design and construction, including the maintenance, repair, refurbishment and restoration of proposed and existing buildings and advice on legal and regulatory issues. Building surveyors have the ability to improve the effectiveness and value of buildings of every type.

Learn more about this service on our [website](#).

**“After completing a master’s in building surveying, I joined the RLB Graduate Programme as a Building Surveyor and was instantly welcomed into the team. Since I joined, no two days have been the same. I often find myself working on multiple projects which has truly given me a wide range of experience to put towards attaining my chartership of which there is ample support available from senior members of the team.”**

**James Durham**  
Graduate Building Surveyor



### What is Specialist Solutions?

Every project has bespoke requirements that often require more specialist support.

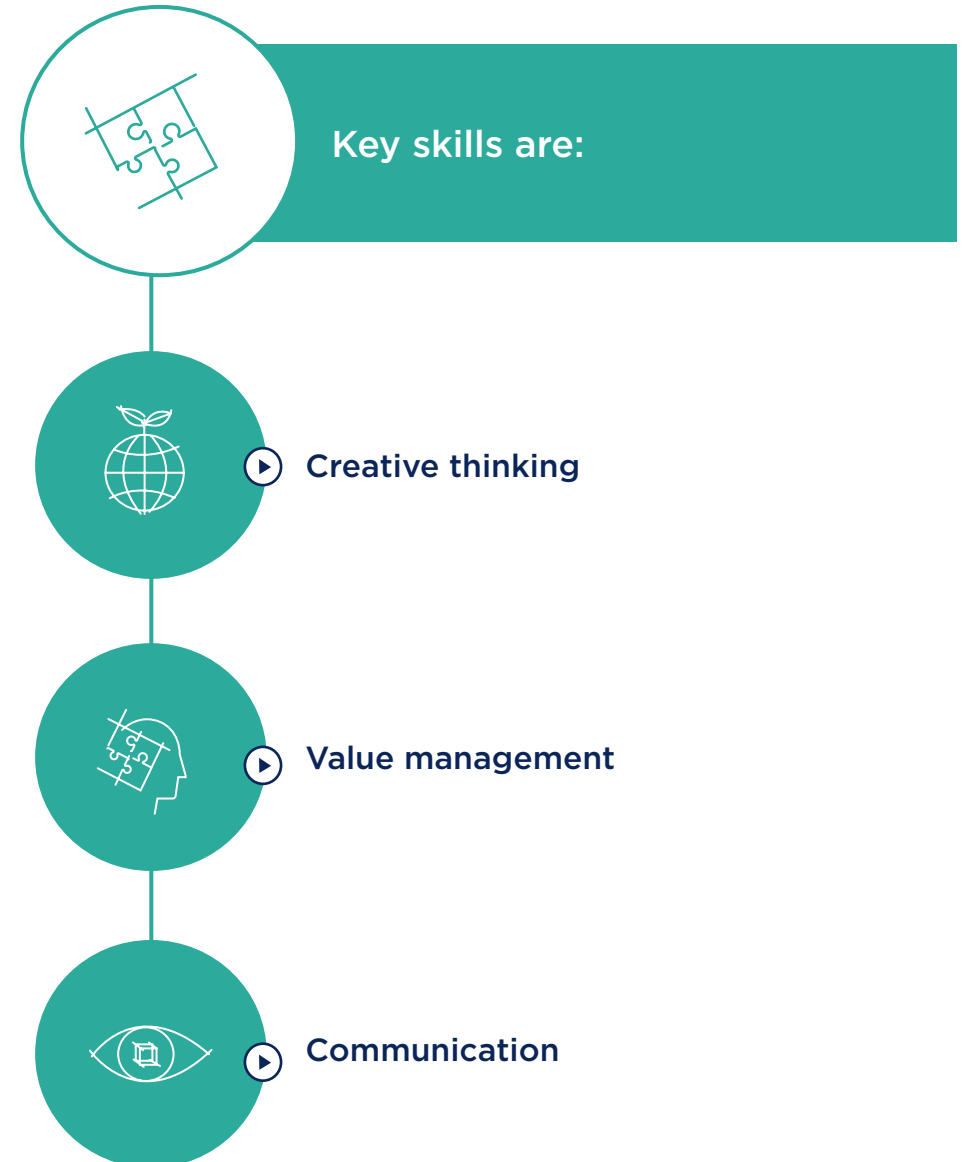
Our specialists provide tailored solutions for individual challenges by applying their knowledge and experience to meet the wider project objectives.

Learn more about this service on our [website](#).

“I have found the mentoring programme useful as it is great to gain exposure to new ideas and different ways of thinking. For example, we often discuss challenges within our jobs and ask the other for advice and it is great to hear other views from people with different backgrounds. The mentor programme has also allowed me to develop many skills which help me progress my career, such as communication, goal setting and networking within the business”.

#### Verity Topham

Assistant Sustainability Consultant  
Birmingham





# DIVERSITY AND INCLUSION

As an independent, 100% employee-owned business, RLB has a 'people-first' mindset. We have created an inclusive workplace culture where diversity is not only accepted but valued and built into our culture.

We believe in a diverse and inclusive environment where we celebrate our people as individuals.

Through our recruitment programmes and diversity and inclusion community, we widen talent pools and bring multiplicity to the workplace by targeting under-represented groups at every level.



# WHY RLB?



**International  
opportunities**



**Earn while  
you learn**



**No two days  
are the same**



**Work with  
great teams**



**It's not all  
work, we  
have fun too**



**Great career  
prospects**



# GLOBAL EXPERIENCE EXCHANGE PROGRAMME

Our Global Experience Exchange Programme (GEEP) offers participants the opportunity to work with and learn from RLB colleagues in exciting locations across Africa, America, Asia, Europe, the Middle East and Oceania.

The programme offers a one month placement in an international RLB office, helping our people to build global networks and enhance their personal and professional development.

Learn more about the GEEP programme on our [website](#).

**Our people get to work across a broad range of projects from office towers to major sport stadiums like Everton Football Stadium.**







*bringing imagination to life*

RLB

Rider  
Levett  
Bucknall



Sonam Khamb  
Talent Acquisition Consultant  
Early Careers  
E. [sonam.khamb@uk.rlb.com](mailto:sonam.khamb@uk.rlb.com)  
T. +44 (0)7867 098895



Sanda Mpanza  
Head of Talent Acquisition  
UK & EU  
E. [sanda.mpanza@uk.rlb.com](mailto:sanda.mpanza@uk.rlb.com)  
T. +44 (0)7584 253627